

Alto I
& ALASKA AU-STATE 2022

Track 1: Major Scale

♩ = 72

do re mi fa so la ti do do ti la so fa mi re do

Track 2: Major Scale

♩ = 72

do re mi fa so la ti do do ti la so fa mi re do

Track 3: Chromatic Scale - sing using solfege or on a single syllable, for example- doo, dee, dah, etc.

8

Track 4: Winter Song (See next page for your voice part.)

~~Track 5: Part Singing: Chorale 323. Follow the directions found on the last two pages of this packet.~~

~~Track 6: Four measure sight singing exercise.~~

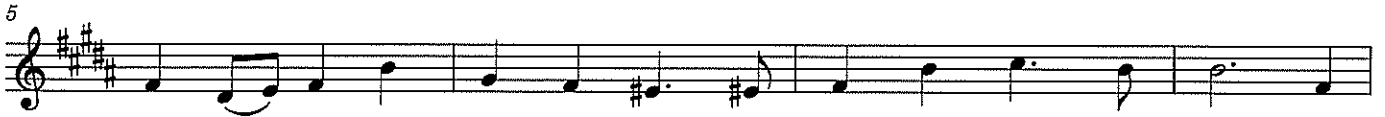
4. Winter Song

Alto I

$\text{♩} = 72$



When dew in the mea - dow turns to frost, sil - v'ry field of dia - monds, And



leaves take wing on cur - rents tossed to wind - swept moun - tain sides. I



feel the call of win - ter song, e - ven as fall a - bides. A



song of win - ter warms my heart 'til spring a - gain pre - sides.