



NAfME All-Northwest Choral Audition Materials

Bass II

All exercises are to be sung a cappella (without accompaniment).
The pitch should be given only once before each exercise.

Track 1: Major Scale

$\text{♩} = 72$

do re mi fa so la ti do do ti la so fa mi re do

Track 2: Major Scale

1

$\text{♩} = 72$

do re mi fa so la ti do do ti la so fa mi re do

Track 3: Chromatic Exercise (mm $\text{♩} = 80-96$)

1

Mah Oh Oo Oo Oo

5

Mah Oh Oo Oo Oo

9

Mah Oh Oo Oo Oo

13

Mah Oh Oo Oo Mah

18

Oh Oo Oo Mah

22

Oh Oo Oo Oo

25

Mah Oh Oo Oo



NAfME All-Northwest Choral Audition Materials

Bass II

Track 4: *America the Beautiful*

1



O beau - ti - ful for spa - cious skies, for am - ber waves of grain, for

6



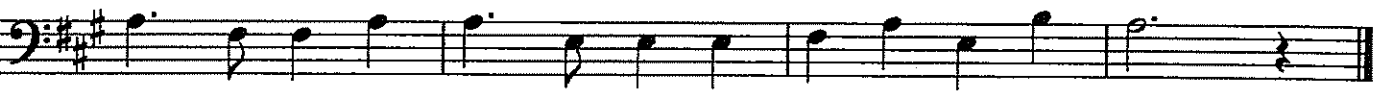
pur - ple moun - tain ma - jest - ies, a - bove the fruit - ed plain! A -

10



mer - i - ca! A - mer - i - ca! God shed his grace on thee and

14



crown thy good with bro - ther - hood from sea to shi - ning sea!