



ALASKA SCHOOL ACTIVITIES ASSOCIATION
4048 Laurel Street, Suite 203, Anchorage, AK 99508
• FAX:561-0720 PHONE:563-3723
www.asaa.org

2016 ALASKA ALL-STATE STRING AUDITIONS

Latest update 9/6/16 for Violin, Cello & String Bass

For 2016, ALASKA will be using the following **NEW** 2017 NAFME All-Northwest Audition materials for the All-State String Orchestra. All music is attached.

The ALASKA auditions will need to be completed by 11:55 PM on Wednesday, September 21st, 2016. Uploading can begin on September 5th.

UPDATE 6/25/2016: "Though the scales are written out directly ascending and descending, students often add the 'turn around' since it's 'natural' for some of them. I will ask the screening managers to alert the screeners that they may hear some variation in the 'turn around' and not to penalize or reward in those instances." Bruce Gutgesell, All-NW

VIOLIN – 5 tracks: the 4 printed attached music exercises
+ a one-minute excerpt from your solo literature

UPDATE 9/6/16: Track 4: Mendelssohn: "Change dotted quarter note = 84" – Changed by All –NW 8/19.

VIOLA -- 5 tracks: the 4 printed attached music exercises
+ a one-minute excerpt from your solo literature

UPDATE 8/30/16: A question was asked about the bowings for the All-NW VIOLA auditions that were originally posted last spring. "Please don't use the version that was originally posted last spring. All the other bowings in the recently posted version are the ones printed in the Breitkopf und Hartel score in IMSLP." P. Ferguson, WMEA Orchestra Curriculum Officer who put the string auditions together. The "updated" VIOLA auditions were posted to the ASAA web-site today.

CELLO – 5 tracks: the 4 printed attached music exercises +
a one-minute excerpt from your solo literature

UPDATE 9/6/16: Track 4 – Mendelssohn: "Changed tempo to dotted quarter = 84" – Changed by All-NW 8/19

STRING BASS – 5 tracks: the 4 printed attached music exercises + a one-minute excerpt from your solo literature

UPDATED 9/6/16: Track 4 – Beethoven: “Should be marked *ff* rather than *p*.” – Changed by All-NA 6/14.

HARP – 3 tracks: the 3 printed attached music exercises

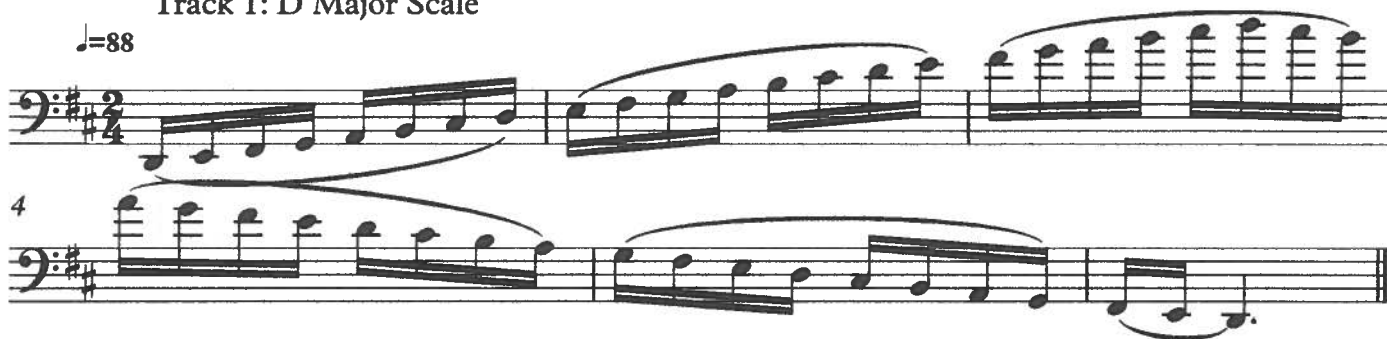


NAfME All-Northwest Strings Audition Materials Set B

Cello

Track 1: D Major Scale

♩=88



Track 2: E Melodic Minor Scale

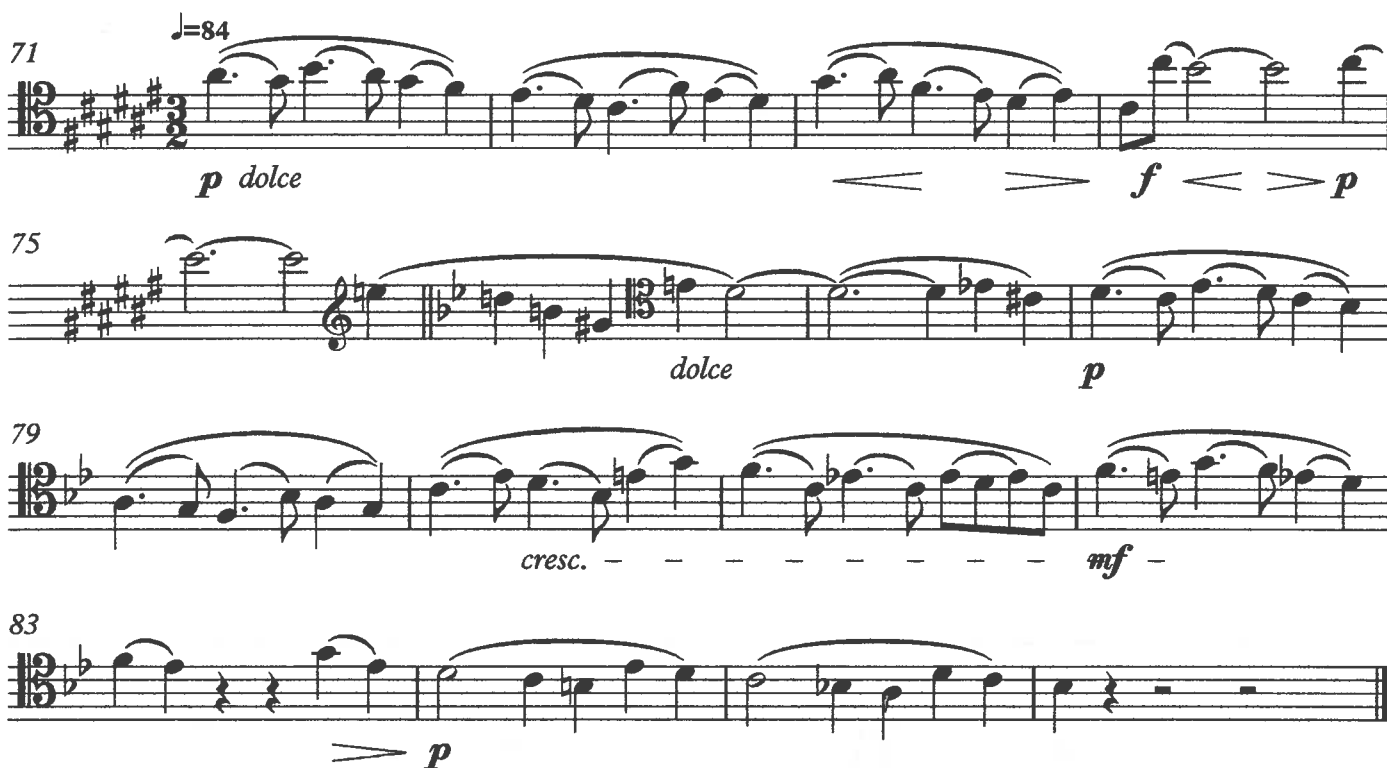
1 ♩=72

détaché



Track 3: Excerpt - *Piano Concert No. 2, Mvmt. 3*, Johannes Brahms

♩=84





NAfME All-Northwest Strings Audition Materials Set B

Cello

Track 4: Excerpt - *Midsummer Night's Dream*, Scherzo, Felix Mendelssohn

♩.=84 *corrected by NW 8/19*

p

p

p

cresc.

sf *f*

Track 5: Identify and play a one-minute excerpt from your solo literature.